

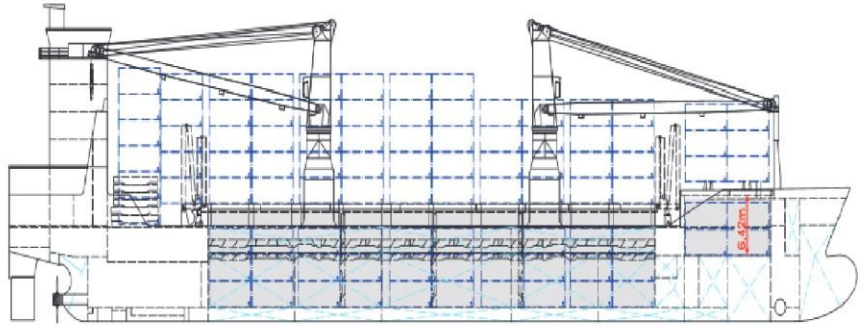


# BROINTERMED LINES LIMITED

Quayside Court, The Quay, Harwich, Essex, CO12 3HH.

Tel.: (01255) 551553 – Fax: (01255) 508652

E-Mail: brointermed@btconnect.com



**MV BREB STAR**

## SHIP'S BASICS

Name	BREB STAR
Built	2010
Typ	Multipurpose tweendeck heavy-lifter
IMO-No.	9425325
Flag	Antigua Barbuda
Call Sign	V2EZ6
Classification	GL + 100 A5 E3 + MC E3 AUT

## DIMENSIONS AND MAIN DATA

Tonnage GT/NT	6.155 / 2.759
Summer dwt	7.700 mt
Length o.a.	122.45 m
Length p.p.	115.63 m
Draft max.	7.15 m
Max. Speed	14,0 knots
Height above keel	41,00 m
Depth to main deck	9,70 m
Fuel consumption	17.0 mt RMG 380 fuel per day of sea 1.75 mt MGO DMA per day in port without gear 4.75 mt MGO DMA per day in port with gear

## SPECIAL EQUIPMENT / FEATURES

Cranes	2 NMF cranes situated portside 120 mt capacity each / 240 mt capacity combined
--------	--

Crane outreach	up to 16 m: 120 mt up to 19 m: 95 mt up to 24 m: 75 mt up to 33 m: 55 mt
----------------	---

Fitted for carriage of dangerous goods of all IMO classes  
Fitted for trading Great Lakes and Australia  
Strengthened for heavy cargoes

## HATCH AND HOLD

Deck strengths per sqm	18.00 mt on tanktop 2.50 mt on tweendeck 2.80 mt on hatchcovers
Cargo hold dimensions	Hold 1: 12,60 x 10,20 x 6,42 m Hold 2: 65,10 x 13,50 x 9,58 m
Cargo hold capacity	9.058 cbm / 348.268 cbft
Floor space under deck	11.854 sqm / 19.956 cbft
Floor space on deck	1.003 sqm / 610.796 sqft
Tween deck	Position 1: height lower hold 4,70 m height on tween deck 4,12 m Position 2: height lower hold 6,00 m height on tween deck 2,82m

## CONTAINER CAPACITY

Container intake	532 TEU nominal 262 TEU at 14mt homogeneously loaded 32 reefer plugs on deck
------------------	--

## COMMUNICATION

Phone	+49 491 798 93 12
E-Mail	charter@eilsum.briese-fleet.com